

DO NOT SCALE FROM THIS DRAWING

SAFETY HEALTH AND ENVIRONMENTAL INFORMATION

In addition to the hazard/risks normally associated with the types of work detailed on this drawing, note the following risks and information.

Risks listed here are not exhaustive. Refer to

CONSTRUCTION

- No significant hazards which should not be reasonably foreseen by a competent contractor

MAINTENANCE AND INSPECTION

- No significant hazards which should not be reasonably foreseen by a competent contractor

RESIDUAL DESIGN RISKS

- No significant hazards which should not be reasonably foreseen by a competent contractor

For information relating to use, cleaning and maintenance refer to the Health and Safety file.

It is assumed that all works will be carried out by a competent contractor working, where appropriate, to an approved method statement.

This plan is based on the Ordnance Survey map with the permission of the controller of HMSO. Crown Copyright. Unauthorised reproduction infringes Crown Copyright and may lead to prosecution or civil proceedings.

Existing Services Legend:

E-D	Electricity
HVD	Electricity High Voltage
TLD	Traffic Lights
W-D	Water
BT-D	British Telecom
CTV-D	Cable Television
FO-D	Fibre Optics
CCTV-D	Close Circuit Television
COMM-D	Communication
GAS-D	Gas Intermediate Pressure
GAS-L	Gas Low Pressure
FSD	Foul Drainage
SUR-D	Surface Drainage
COMB-D	Combined Drainage
EFF-D	Effluent Drainage
UNK-D	Unknown
OFF-D	Offset Fill-Line
OIL-D	Oil Pipe
VENT-D	Vent Line
FUEL-D	Fuel Line
VR-D	Vapour Recovery
G-D	Gauge Line
NW-D	Natural Watercourse

Legend:

- Scheme Boundary

Proposed Works Legend:

- Flood Walls

Notes:

- This drawing has been generated from statutory record information only. No onsite detection has been carried out therefore the location of services shown within this drawing should be taken as approximate.
- To be printed in colour.

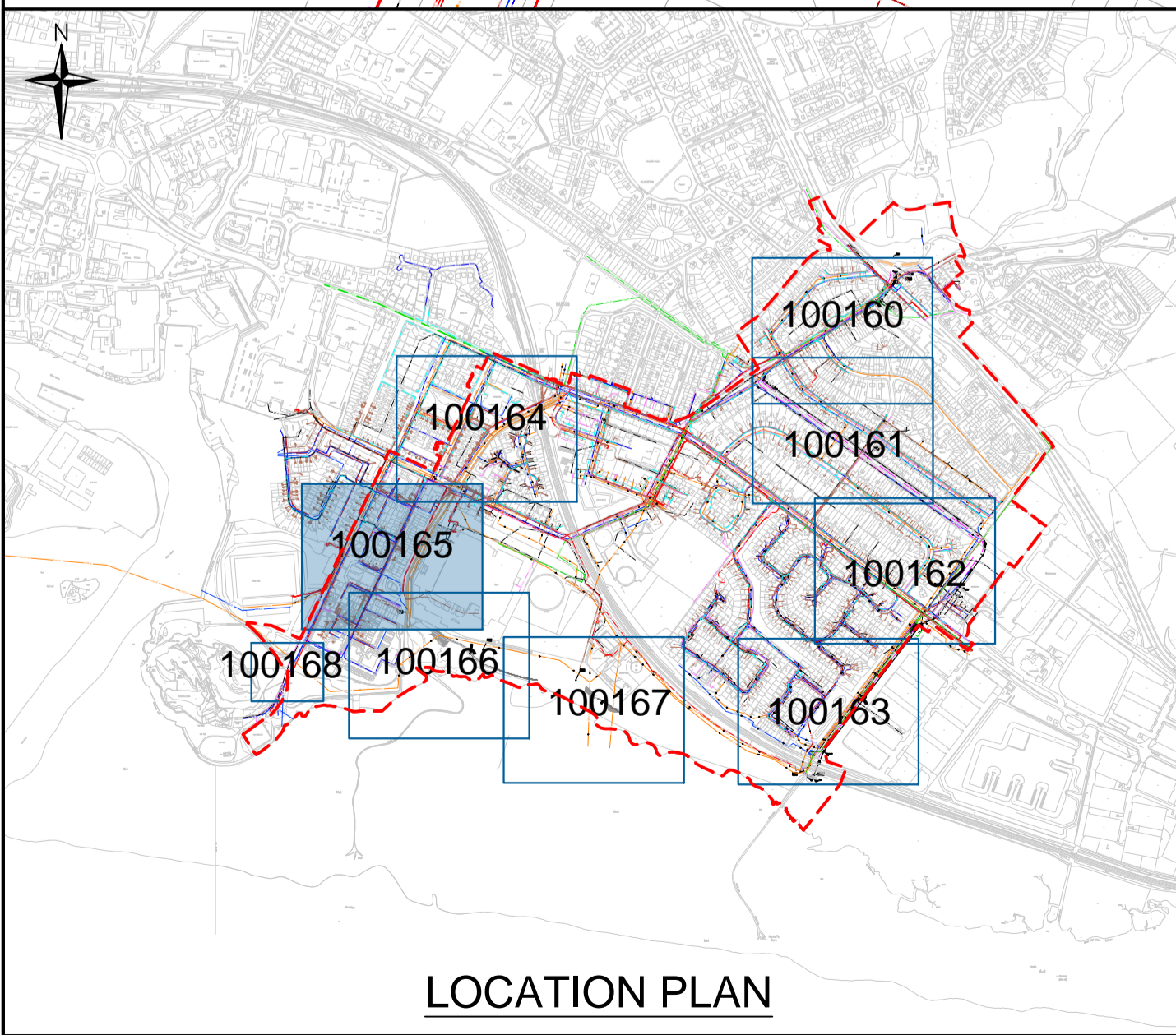
P01.3	20/03/24	THIRD ISSUE	KAB	SMcA	SJGS
P01.2	13/03/24	SECOND ISSUE	KAB	SMcA	SJGS
P01.1	29/02/24	FIRST ISSUE	KAB	SMcA	SJGS
Rev	Date	Description	Drawn	Chkd	Appd

For Information

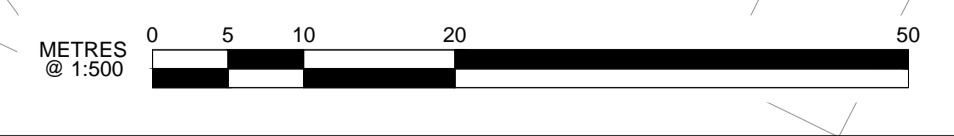
Project Title
**Gruggies Burn
Flood Alleviation Scheme**

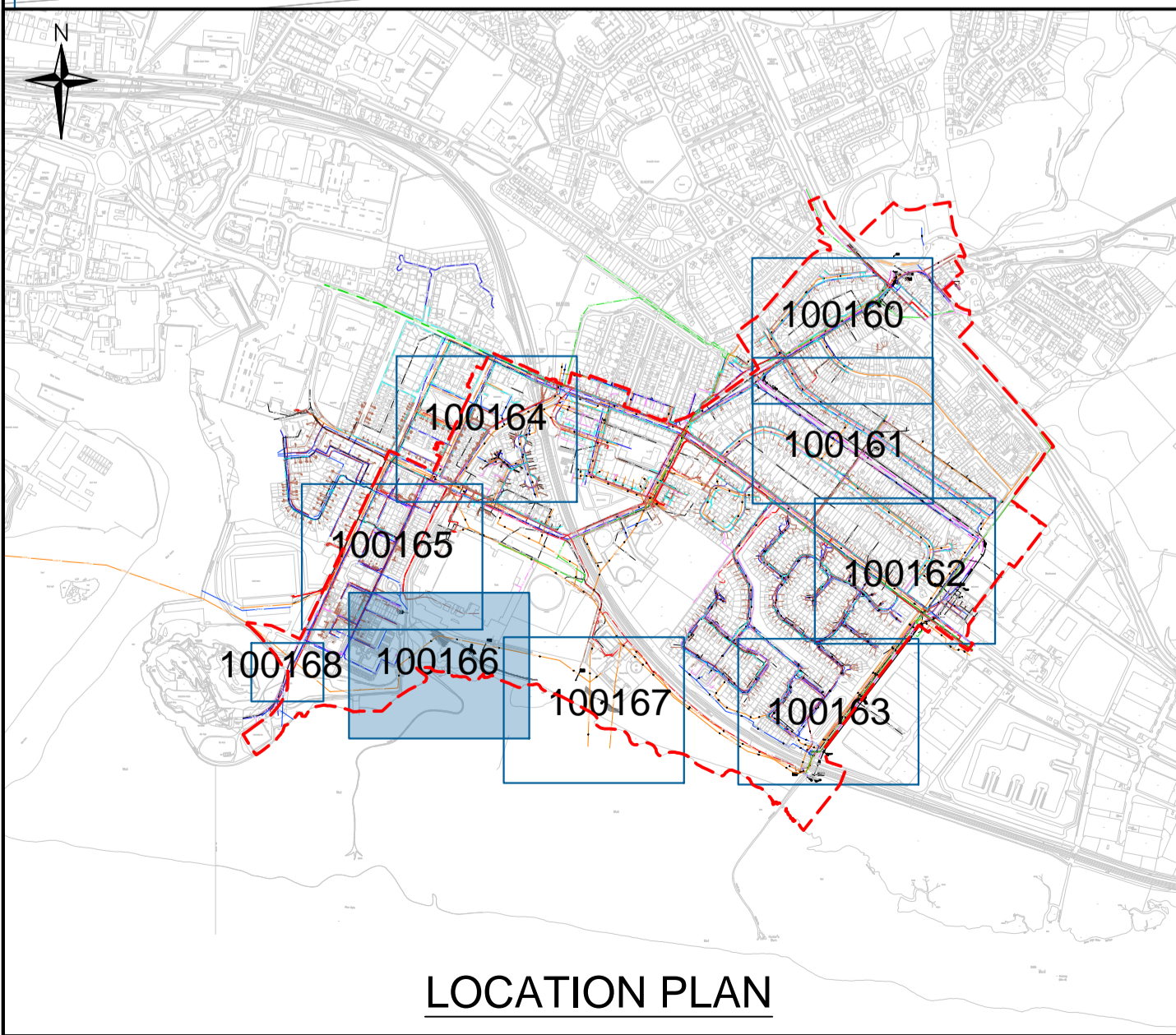
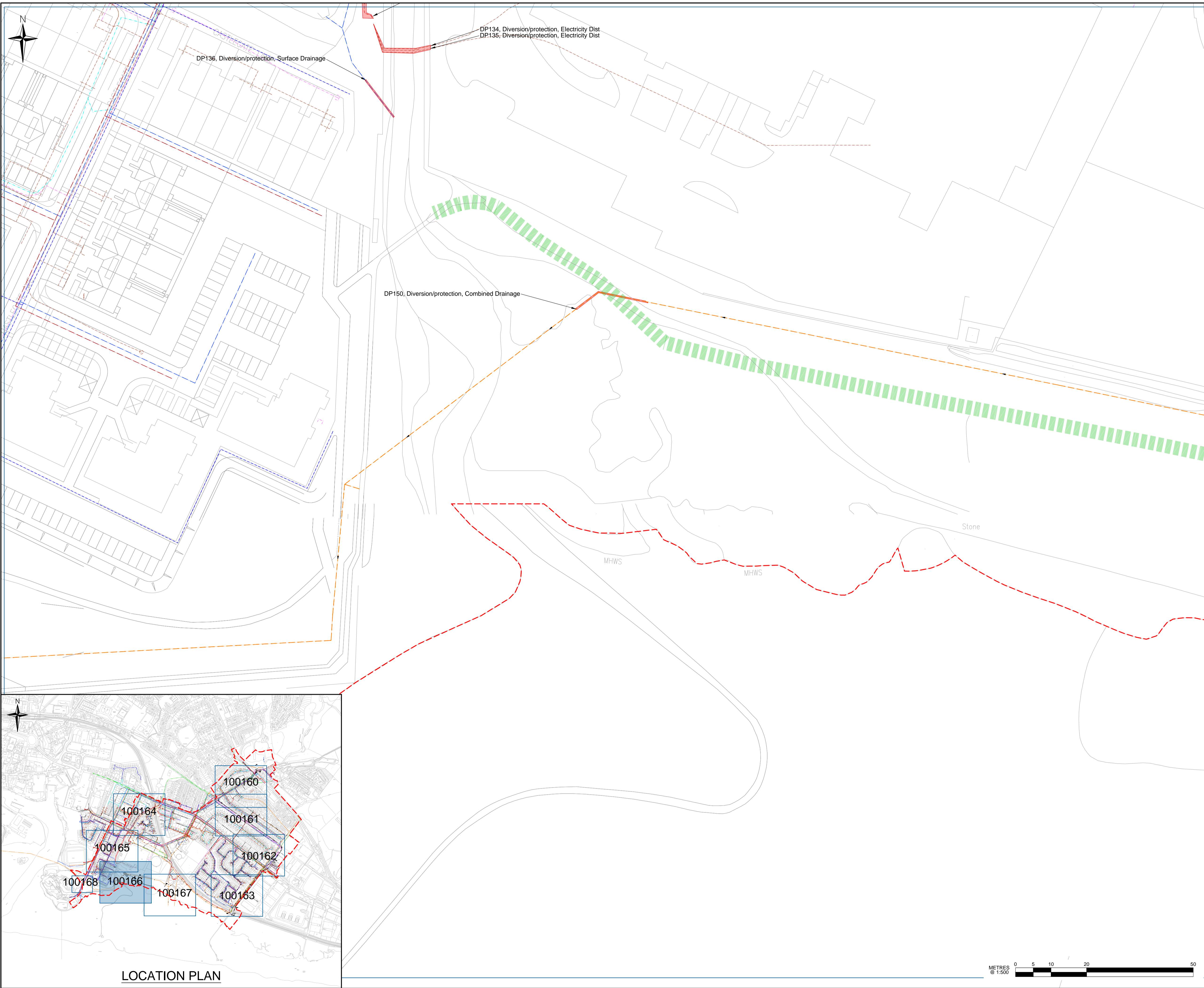
Drawing Title
**Existing Services
Flood Walls
Sheet 2 of 2**

Drawn	Date	Designed	Date
KAB	29/02/24	-	-
Checked	Date	Approved	Date
SMcA	20/03/24	SJGS	20/03/24
Size	Scale	Fairhurst Ref	Status
A1	1:500	153386-PW-0165	P01.3
Drawing Number	Status	Revision	
GBFAS-FRH-ZZ-ZZ-DR-W-100165	S2		



LOCATION PLAN






DO NOT SCALE FROM THIS DRAWING

SAFETY HEALTH AND ENVIRONMENTAL INFORMATION


In addition to the hazard/risks normally associated with the types of work detailed on this drawing, note the following risks and information.

Risks listed here are not exhaustive. Refer to

CONSTRUCTION

- No significant hazards which should not be reasonably foreseen by a competent contractor 

MAINTENANCE AND INSPECTION

- No significant hazards which should not be reasonably foreseen by a competent contractor 

RESIDUAL DESIGN RISKS

- No significant hazards which should not be reasonably foreseen by a competent contractor

For information relating to use, cleaning and maintenance refer to the Health and Safety file.

It is assumed that all works will be carried out by a competent contractor working, where appropriate, to an approved method statement.

This plan is based on the Ordnance Survey map with the permission of the controller of HMSO. Crown Copyright. Unauthorised reproduction infringes Crown Copyright and may lead to prosecution or civil proceedings.

Existing Services Legend:

E-D	Electricity
HVD	Electricity High Voltage
TSLD	Traffic Lights
W-D	Water
BT	British Telecom
CTV-D	Cable Television
FO-D	Fibre Optics
CCTV-D	Close Circuit Television
COMM-D	Communication
GAS-D	Gas Intermediate Pressure
GAS-L	Gas Low Pressure
FWD	Foul Drainage
SWD	Surface Drainage
CSD	Combined Drainage
EDW	Effluent Drainage
UNK-D	Unknown
OFF-D	Offset Fill-Line
OIL-D	Oil Pipe
VENT	Vent Line
F-D	Fuel Line
VR-D	Vapour Recovery
G-D	Gauge Line
NW	Natural Watercourse

Legend:

- Scheme Boundary

Proposed Works Legend:

- Tidal Embankment

Notes:

- This drawing has been generated from statutory record information only. No onsite detection has been carried out therefore the location of services shown within this drawing should be taken as approximate.
- To be printed in colour.

P01.3	20/03/24	THIRD ISSUE	KAB	SMcA	SJGS
P01.2	13/03/24	SECOND ISSUE	KAB	SMcA	SJGS
P01.1	29/02/24	FIRST ISSUE	KAB	SMcA	SJGS
Rev	Date	Description	Drawn	Chkd	Appd

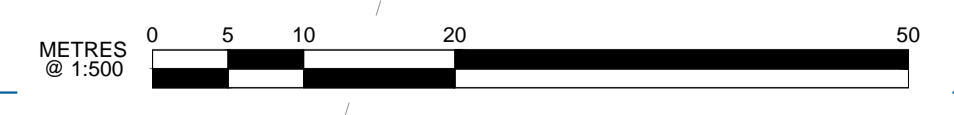
For Information

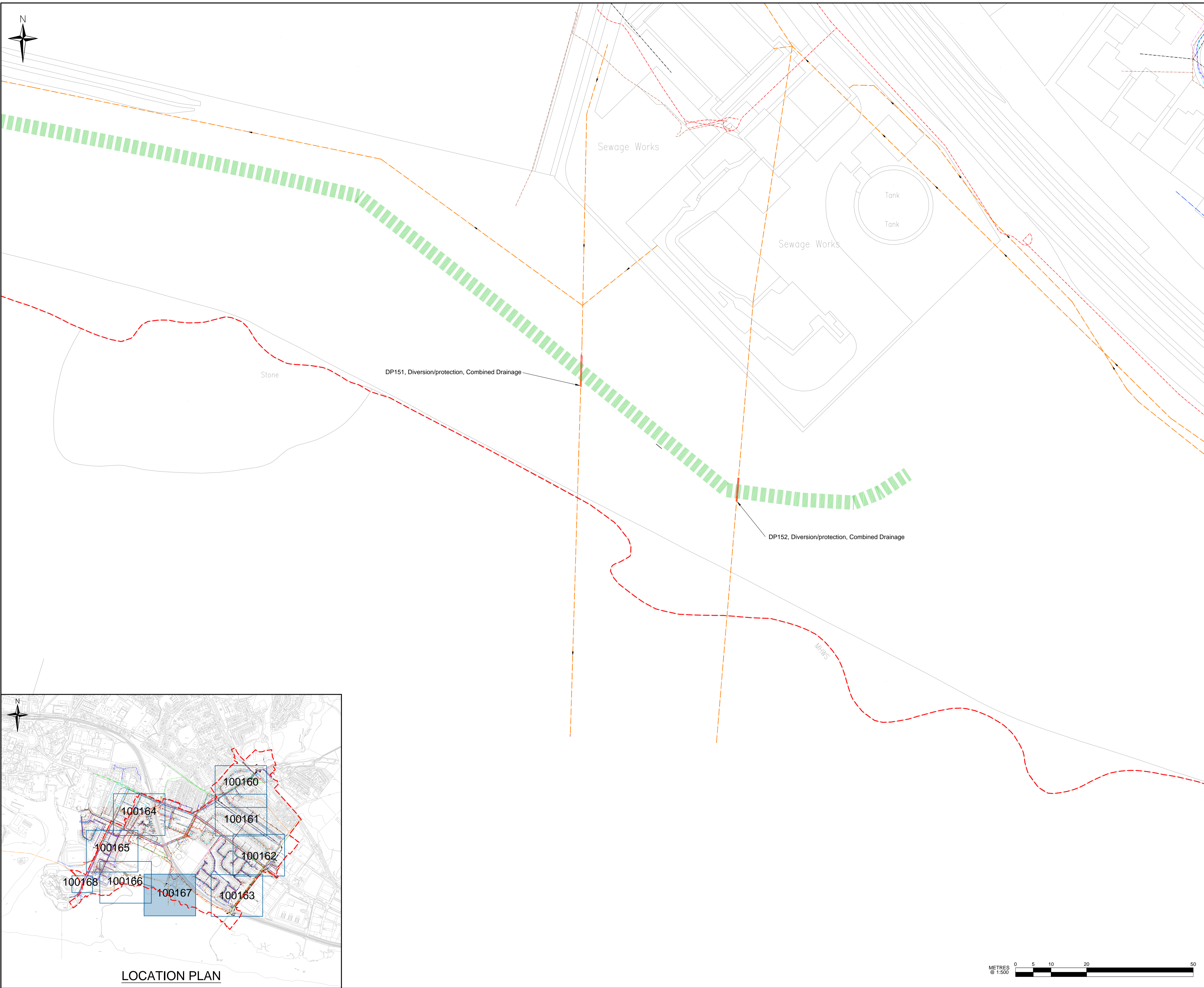
**Gruggies Burn
Flood Alleviation Scheme**

**Existing Services
Tidal Embankment
Sheet 1 of 2**

Drawn	Date	Designed	Date
KAB	29/02/24	-	-
Checked	Date	Approved	Date
SMcA	20/03/24	SJGS	20/03/24
Size	Scale	Fairhurst Ref	153386-PW-0166
A1	1:500		

Drawing Number	Status	Revision
GBFAS-FRH-ZZ-ZZ-DR-W-100166	S2	P01.3






DO NOT SCALE FROM THIS DRAWING

SAFETY HEALTH AND ENVIRONMENTAL INFORMATION


In addition to the hazard/risks normally associated with the types of work detailed on this drawing, note the following risks and information.

Risks listed here are not exhaustive. Refer to

CONSTRUCTION

- No significant hazards which should not be reasonably foreseen by a competent contractor 

MAINTENANCE AND INSPECTION

- No significant hazards which should not be reasonably foreseen by a competent contractor 

RESIDUAL DESIGN RISKS

- No significant hazards which should not be reasonably foreseen by a competent contractor

For information relating to use, cleaning and maintenance refer to the Health and Safety file.

It is assumed that all works will be carried out by a competent contractor working, where appropriate, to an approved method statement.

This plan is based on the Ordnance Survey map with the permission of the controller of HMSO. Crown Copyright. Unauthorised reproduction infringes Crown Copyright and may lead to prosecution or civil proceedings.

Existing Services Legend:

E-D	Electricity
HVD	Electricity High Voltage
TLD	Traffic Lights
W-D	Water
BT-D	British Telecom
CTV-D	Cable Television
FO-D	Fibre Optics
CCTV-D	Close Circuit Television
COMM-D	Communication
GAS-D	Gas Intermediate Pressure
GAS-L	Gas Low Pressure
FWD	Foul Drainage
SWS-D	Surface Drainage
CDS-D	Combined Drainage
EWS-EI	Effluent Drainage
UNK-D	Unknown
OFF-D	Offset Fill-Line
OIL-D	Oil Pipe
VENT	Vent Line
F-D	Fuel Line
VR-D	Vapour Recovery
G-D	Gauge Line
NWS-D	Natural Watercourse

Legend:

- Scheme Boundary

Proposed Works Legend:

- Tidal Embankment

Notes:

- This drawing has been generated from statutory record information only. No onsite detection has been carried out therefore the location of services shown within this drawing should be taken as approximate.
- To be printed in colour.

P01.3	20/03/24	THIRD ISSUE	KAB	SMcA	SJGS
P01.2	13/03/24	SECOND ISSUE	KAB	SMcA	SJGS
P01.1	29/02/24	FIRST ISSUE	KAB	SMcA	SJGS
Rev	Date	Description	Drawn	Chkd	Appd

For Information

**Gruggies Burn
Flood Alleviation Scheme**

**Existing Services
Tidal Embankment
Sheet 2 of 2**

Drawn	Date	Designed	Date
KAB	29/02/24	-	-
Checked	Date	Approved	Date
SMcA	20/03/24	SJGS	20/03/24
Size	Scale	Fairhurst Ref	153386-PW-0167
A1	1:500		
Drawing Number	Status	Revision	
GBFAS-FRH-ZZ-ZZ-DR-W-100167	S2	P01.3	

