


DO NOT SCALE FROM THIS DRAWING

SAFETY HEALTH AND ENVIRONMENTAL INFORMATION


In addition to the hazard/risks normally associated with the types of work detailed on this drawing, note the following risks and information.

Risks listed here are not exhaustive. Refer to

CONSTRUCTION

- No significant hazards which should not be reasonably foreseen by a competent contractor 

MAINTENANCE AND INSPECTION

- No significant hazards which should not be reasonably foreseen by a competent contractor 

RESIDUAL DESIGN RISKS

- No significant hazards which should not be reasonably foreseen by a competent contractor

For information relating to use, cleaning and maintenance refer to the Health and Safety file.

It is assumed that all works will be carried out by a competent contractor working, where appropriate, to an approved method statement.

This plan is based on the Ordnance Survey map with the permission of the controller of HMSO, Crown Copyright. Unauthorised reproduction infringes Crown Copyright and may lead to prosecution or civil proceedings.

Existing Services Legend:

E-D	Electricity
HVD	Electricity High Voltage
TSLC	Traffic Lights
W-D	Water
BT	British Telecom
CTV	Cable Television
FO	Fibre Optics
CCTV	Close Circuit Television
COMM	Communication
GAS-D	Gas Intermediate Pressure
GAS-L	Gas Low Pressure
FWD	Foul Drainage
SD	Surface Drainage
CD	Combined Drainage
EWS	Effluent Drainage
UNK	Unknown
OFF	Offset Fill-Line
OIL	Oil Pipe
VENT	Vent Line
FUEL	Fuel Line
VR	Vapour Recovery
GA	Gauge Line
NW	Natural Watercourse

Legend:

- Scheme Boundary

Proposed Works Legend:

- Culvert Route

Notes:

- This drawing has been generated from statutory record information only. No onsite detection has been carried out therefore the location of services shown within this drawing should be taken as approximate.
- To be printed in colour.

P01.3	20/03/24	THIRD ISSUE	KAB	SMcA	SJGS
P01.2	13/03/24	SECOND ISSUE	KAB	SMcA	SJGS
P01.1	29/02/24	FIRST ISSUE	KAB	SMcA	SJGS

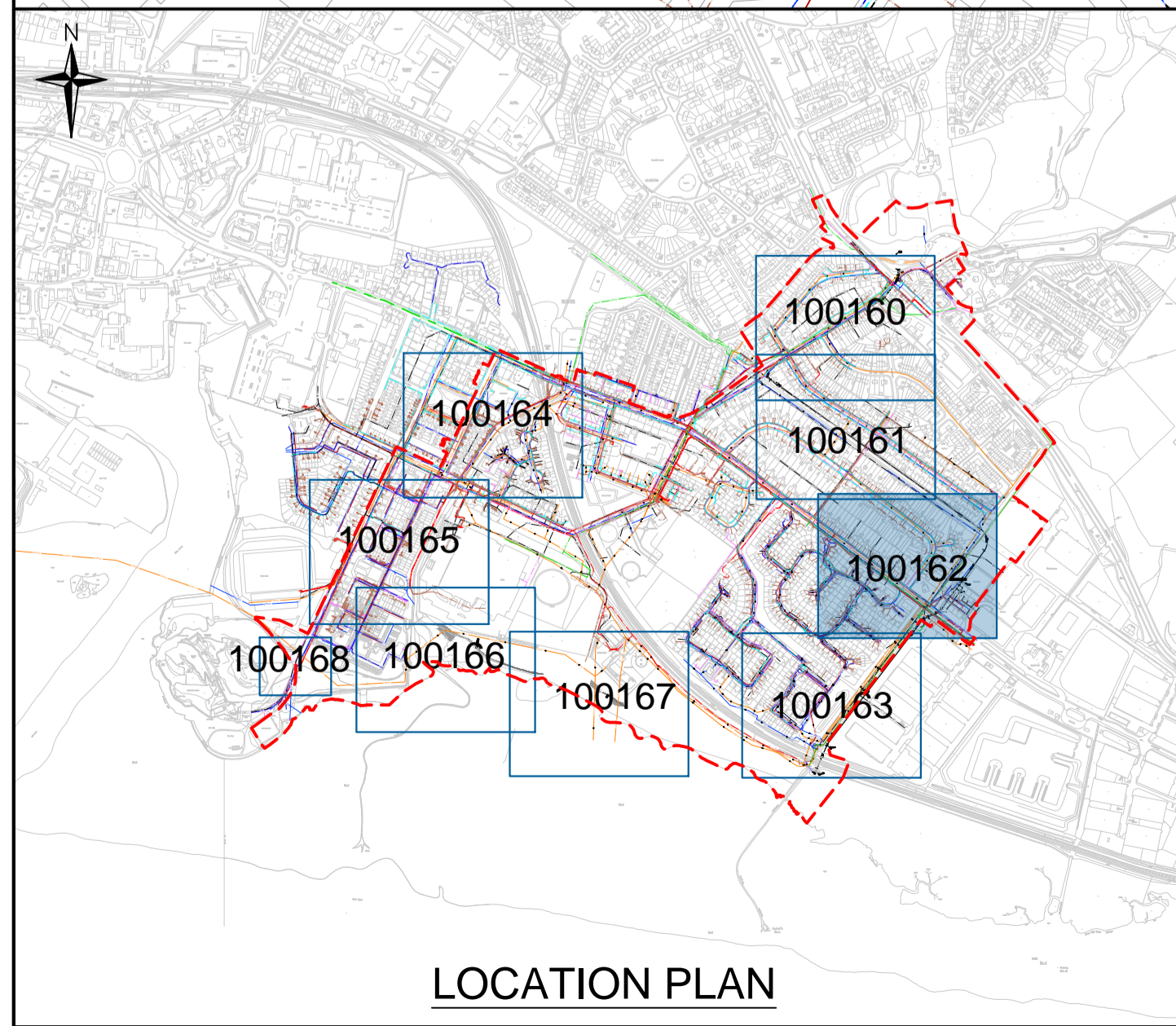
Rev	Date	Description	Drawn	Chkd	Appd
-----	------	-------------	-------	------	------

For Information

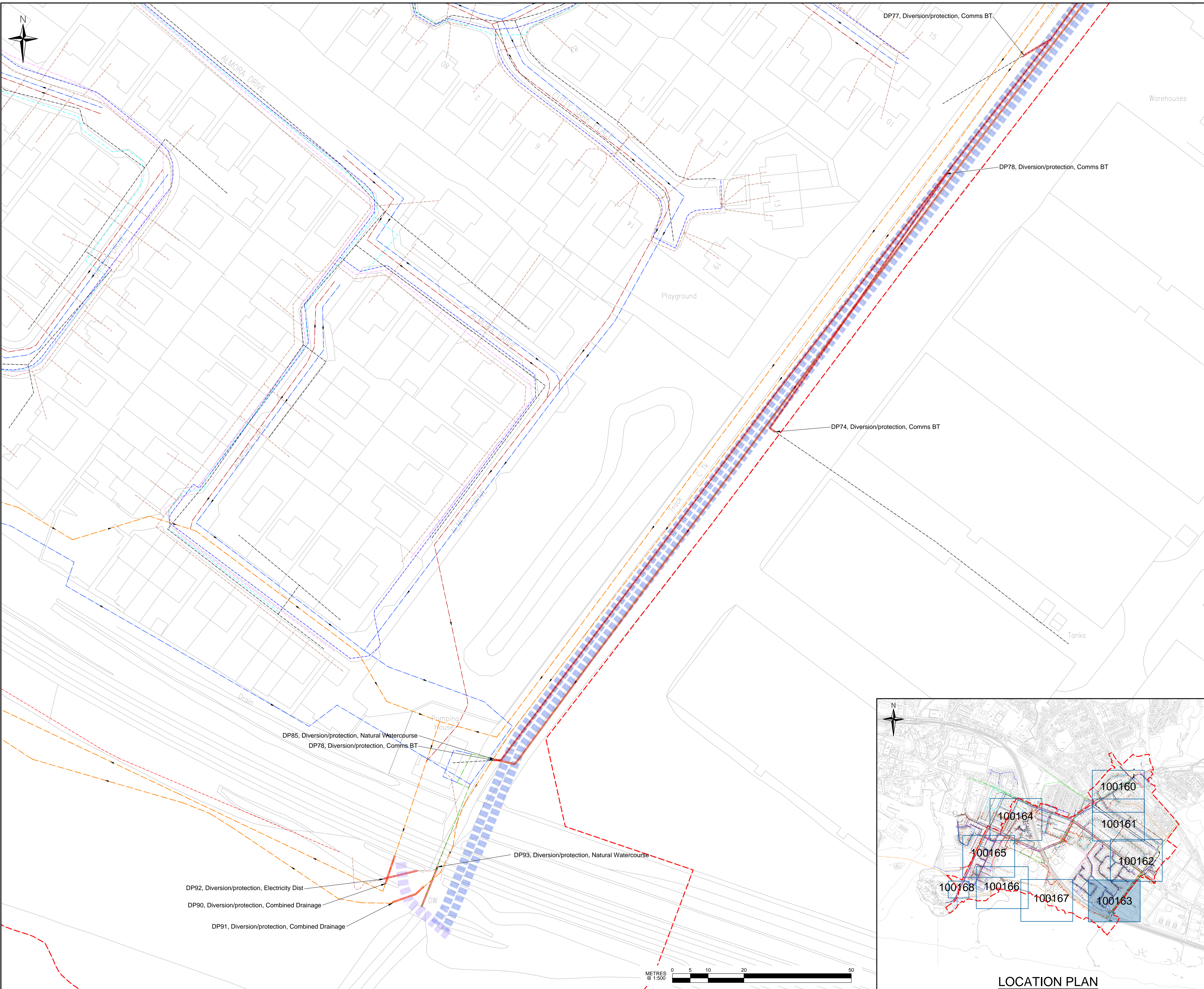
Project Title
Gruggies Burn
Flood Alleviation Scheme

Drawing Title
Existing Services
Culvert Route
Sheet 3 of 4

Drawn	Date	Designed	Date
KAB	29/02/24	-	-
Checked	Date	Approved	Date
SMcA	20/03/24	SJGS	20/03/24
Size	Scale	Fairhurst Ref	
A1	1:500	153386-PW-0162	
Drawing Number	Status	Revision	
GBFAS-FRH-ZZ-ZZ-DR-W-100162	S2	P01.3	



LOCATION PLAN




DO NOT SCALE FROM THIS DRAWING

SAFETY HEALTH AND ENVIRONMENTAL INFORMATION


In addition to the hazard/risks normally associated with the types of work detailed on this drawing, note the following risks and information.

Risks listed here are not exhaustive. Refer to

CONSTRUCTION

- No significant hazards which should not be reasonably foreseen by a competent contractor 

MAINTENANCE AND INSPECTION

- No significant hazards which should not be reasonably foreseen by a competent contractor 

RESIDUAL DESIGN RISKS

- No significant hazards which should not be reasonably foreseen by a competent contractor

For information relating to use, cleaning and maintenance refer to the Health and Safety file.

It is assumed that all works will be carried out by a competent contractor working, where appropriate, to an approved method statement.

This plan is based on the Ordnance Survey map with the permission of the controller of HMSO. Crown Copyright. Unauthorised reproduction infringes Crown Copyright and may lead to prosecution or civil proceedings.

Existing Services Legend:

E-D	Electricity
HVD	Electricity High Voltage
TSL	Traffic Lights
W-D	Water
BT-D	British Telecom
CTV-D	Cable Television
FO-D	Fibre Optics
CCTV-D	Close Circuit Television
COMM-D	Communication
GAS-D	Gas Intermediate Pressure
GAS-L	Gas Low Pressure
FWD	Foul Drainage
SWS-D	Surface Drainage
CWS-D	Combined Drainage
EWSD	Effluent Drainage
UNK-D	Unknown
OFF-D	Offset Fill-Line
OIL-D	Oil Pipe
VENT	Vent Line
FUEL	Fuel Line
VRG	Vapour Recovery
G-L	Gauge Line
NW	Natural Watercourse

Legend:

- Scheme Boundary

Proposed Works Legend:

- Culvert Route
- Culvert Outlet

Notes:

- This drawing has been generated from statutory record information only. No onsite detection has been carried out therefore the location of services shown within this drawing should be taken as approximate.
- To be printed in colour.

P01.3	20/03/24	THIRD ISSUE	KAB	SMcA	SJGS
P01.2	13/03/24	SECOND ISSUE	KAB	SMcA	SJGS
P01.1	29/02/24	FIRST ISSUE	KAB	SMcA	SJGS
Rev	Date	Description	Drawn	Chkd	Appd

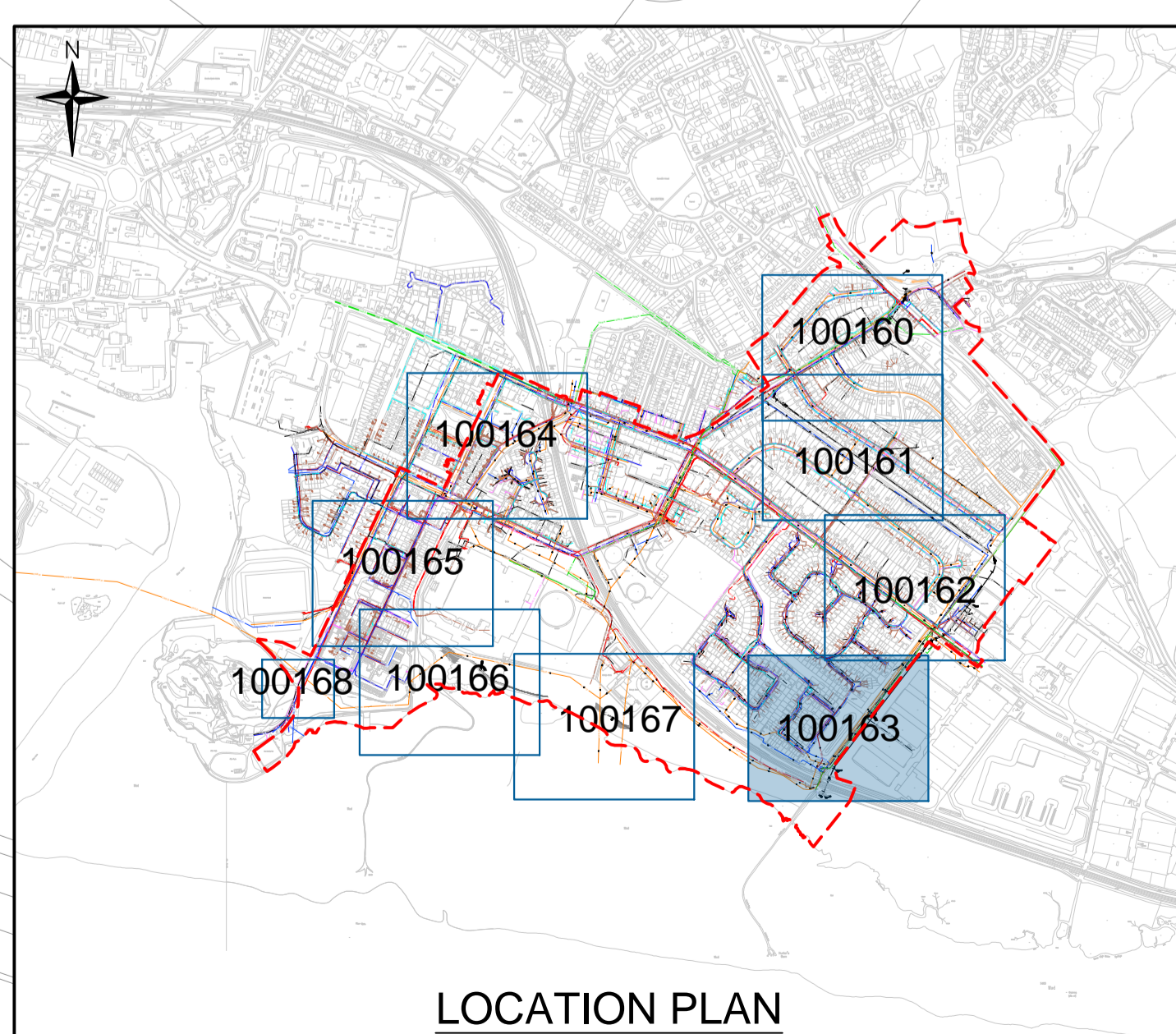
For Information

Gruggies Burn Flood Alleviation Scheme

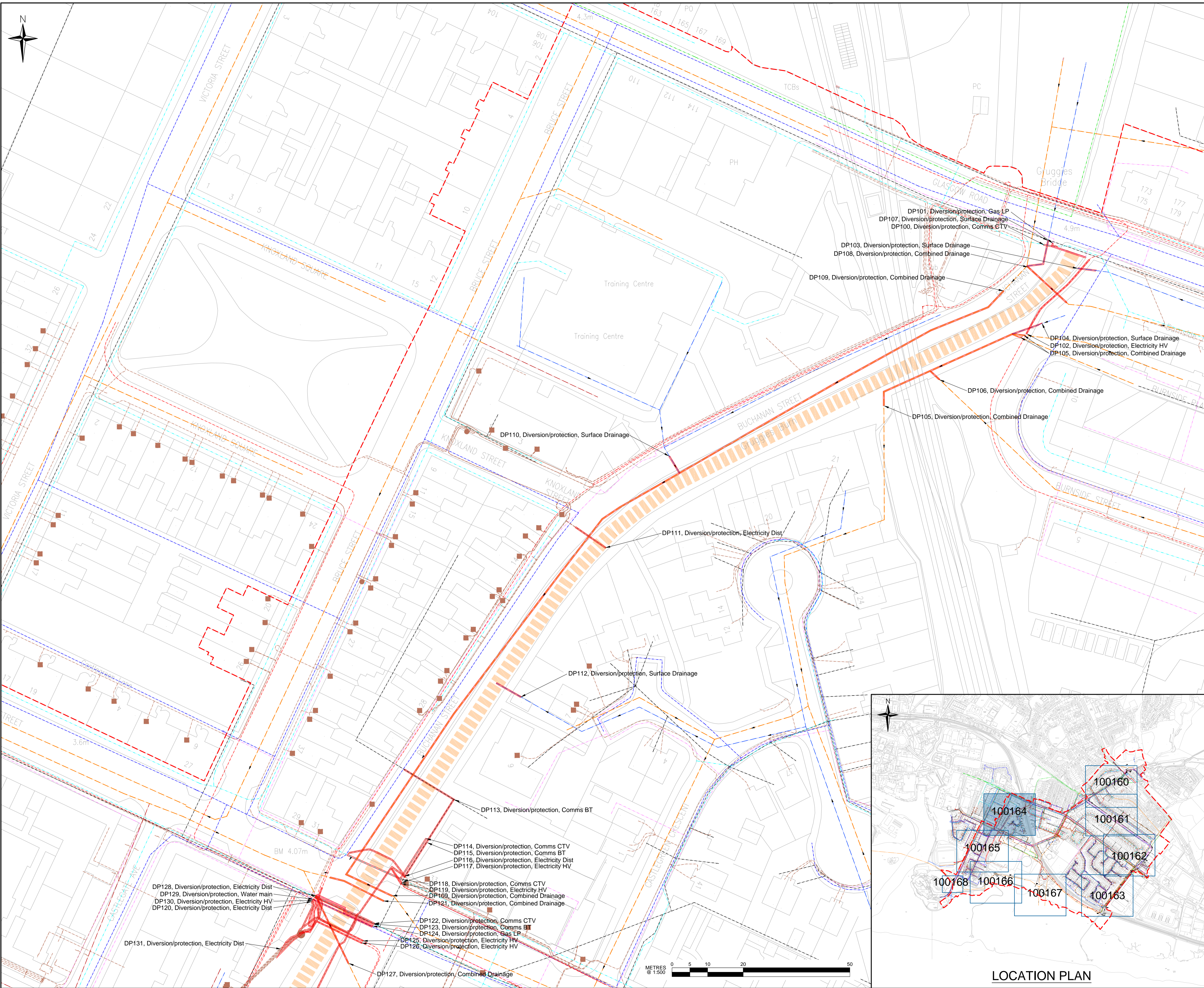
Existing Services Culvert Route Sheet 4 of 4

Drawn	Date	Designed	Date
KAB	29/02/24	-	-
Checked	Date	Approved	Date
SMcA	20/03/24	SJGS	20/03/24
Size	Scale	Fairhurst Ref	
A1	JGS	153386-PW-0163	

Drawing Number	Status	Revision
GBFAS-FRH-ZZ-ZZ-DR-W-100163	S2	P01.3



LOCATION PLAN



DO NOT SCALE FROM THIS DRAWING

SAFETY HEALTH AND ENVIRONMENTAL INFORMATION

In addition to the hazard/risks normally associated with the types of work detailed on this drawing, note the following risks and information.

Risks listed here are not exhaustive. Refer to

CONSTRUCTION

- No significant hazards which should not be reasonably foreseen by a competent contractor

MAINTENANCE AND INSPECTION

- No significant hazards which should not be reasonably foreseen by a competent contractor

RESIDUAL DESIGN RISKS

- No significant hazards which should not be reasonably foreseen by a competent contractor

For information relating to use, cleaning and maintenance refer to the Health and Safety file.

It is assumed that all works will be carried out by a competent contractor working, where appropriate, to an approved method statement.

This plan is based on the Ordnance Survey map with the permission of the controller of HMSO, Crown Copyright. Unauthorised reproduction infringes Crown Copyright and may lead to prosecution or civil proceedings.

Existing Services Legend:

E-D	Electricity
EHV-D	Electricity High Voltage
TLD	Traffic Lights
W-D	Water
BT-D	British Telecom
CTV-D	Cable Television
FO-D	Fibre Optics
CCTV-D	Close Circuit Television
COMM-D	Communication
GAS-D	Gas Intermediate Pressure
GAS-LP-D	Gas Low Pressure
F-D	Foul Drainage
SD-D	Surface Drainage
CD-D	Combined Drainage
ED-D	Effluent Drainage
UNK-D	Unknown
OFF-D	Offset Fill-Line
OIL-D	Oil Pipe
VENT-D	Vent Line
F-D	Fuel Line
VR-D	Vapour Recovery
G-D	Gauge Line
NW-D	Natural Watercourse

Legend:

- Scheme Boundary

Proposed Works Legend:

- Flood Walls

Notes:

- This drawing has been generated from statutory record information only. No onsite detection has been carried out therefore the location of services shown within this drawing should be taken as approximate.
- To be printed in colour.

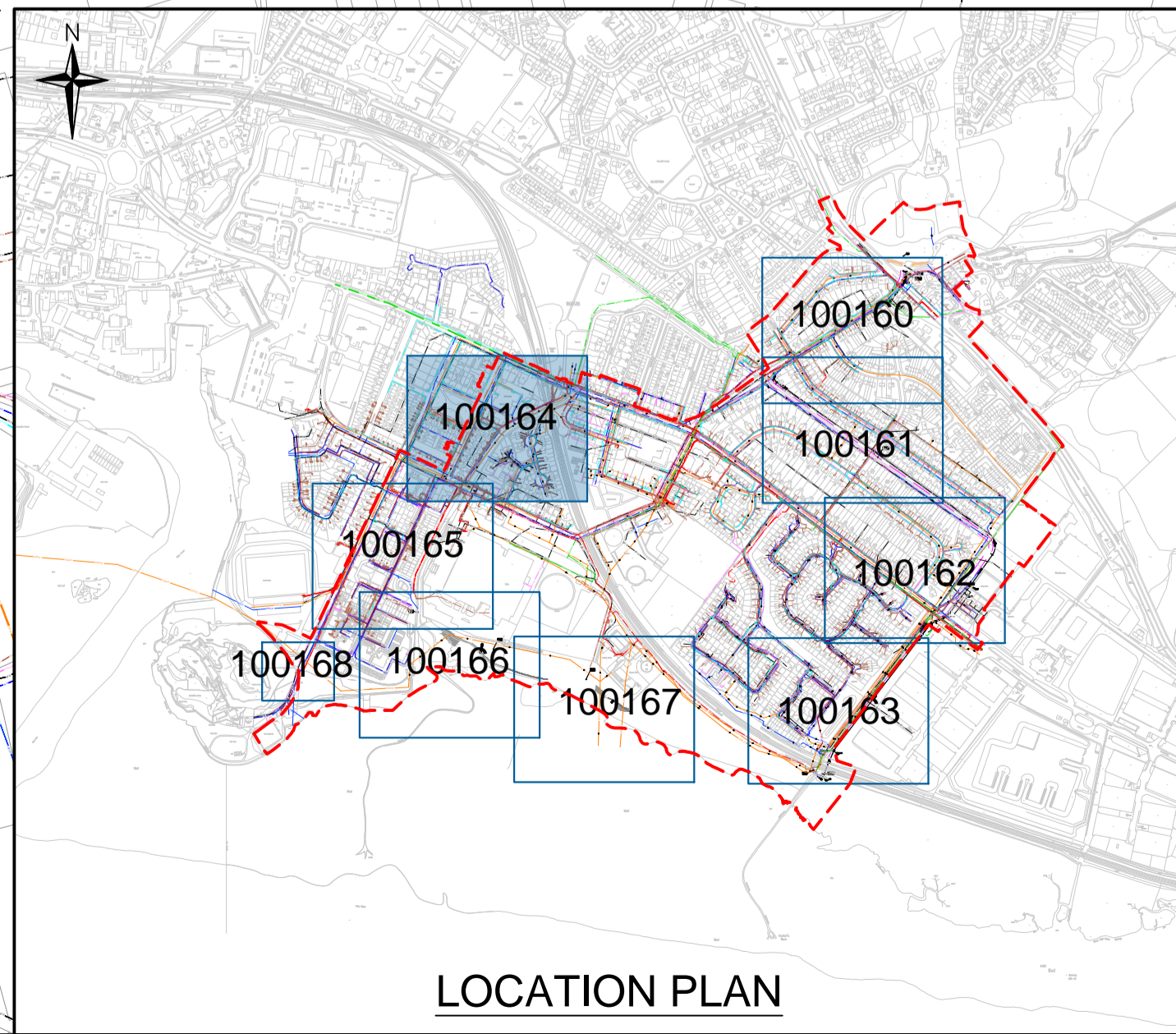
P01.3	20/03/24	THIRD ISSUE	KAB	SMcA	SJGS
P01.2	13/03/24	SECOND ISSUE	KAB	SMcA	SJGS
P01.1	29/02/24	FIRST ISSUE	KAB	SMcA	SJGS
Rev	Date	Description	Drawn	Chkd	Appd

For Information

Gruggies Burn Flood Alleviation Scheme

Existing Services Flood Walls Sheet 1 of 2

Drawn	Date	Designed	Date
KAB	29/02/24	-	-
Checked	Date	Approved	Date
SMcA	20/03/24	SJGS	20/03/24
Size	Scale	Fairhurst Ref	
A1	1:500	153386-PW-0164	
Drawing Number	Status	Revision	
GBFAS-FRH-ZZ-ZZ-DR-W-100164	S2	P01.3	



LOCATION PLAN